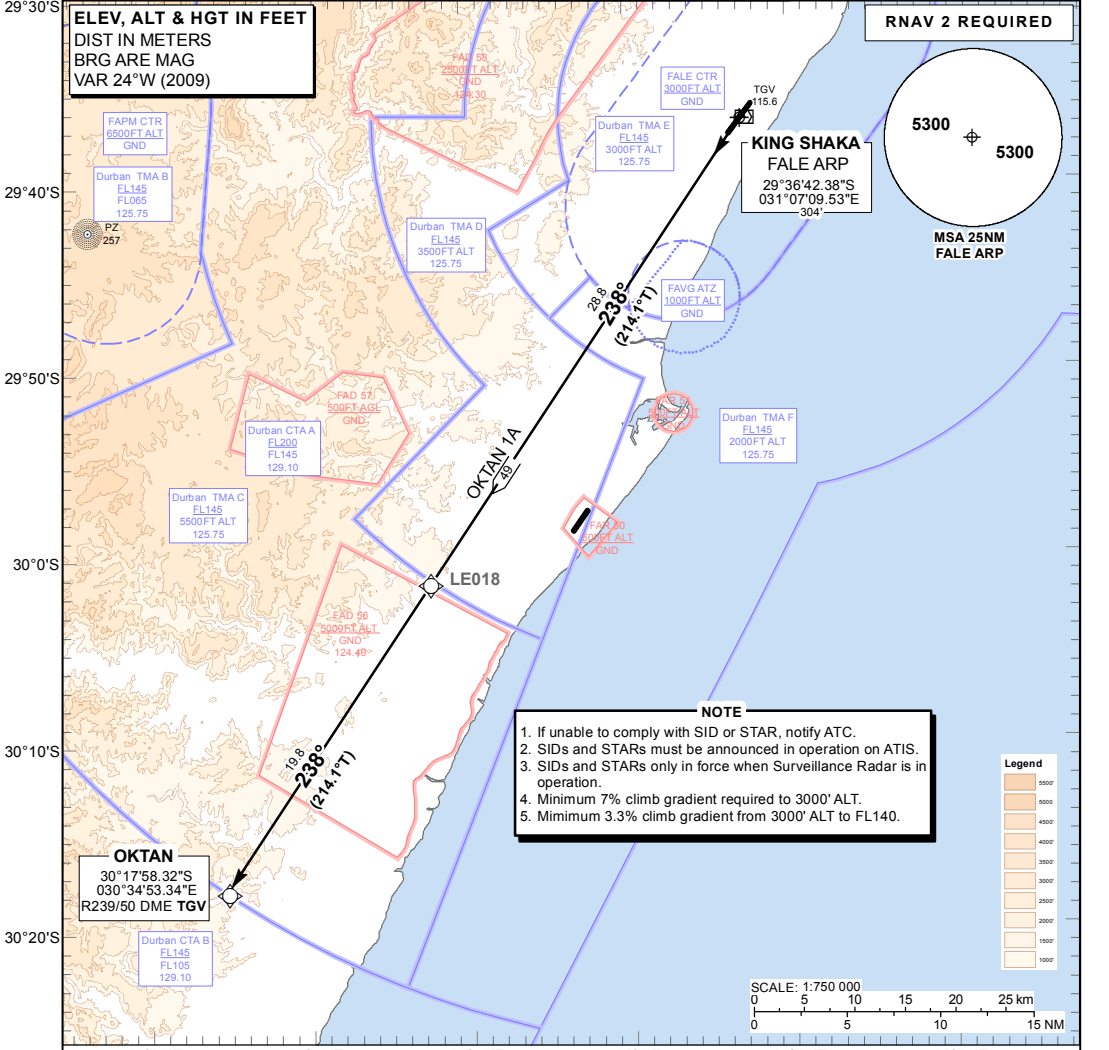


**STANDARD DEPARTURE
CHART -
INSTRUMENT
(SID)**

TRANSITIONAL ALTITUDE
5500'
TRANSITIONAL LEVEL
ATC

RADAR APP: 125.75
TWR: 118.45
GND: 121.65
ATIS: 127.00

**DURBAN
(KING SHAKA INTERNATIONAL)
RNAV (GNSS) RWY 24
OKTAN 1A**



CHANGE: New Format

**OKTAN 1A:
RWY 24**

Climb to FL070. Proceed direct to OKTAN. Further climb will be under radar control. At OKTAN set course as per flight plan.

Restricted to a minimum climb gradient of 7.0% to 3000' ALT.

- 7.0% @ 140KT IAS = 992 FPM
- 7.0% @ 180KT IAS = 1276 FPM
- 7.0% @ 220KT IAS = 1560 FPM

COMMUNICATION FAILURE PROCEDURE (Squawk 7600)

Maintain RWY track to LE018 maintaining last assigned flight level or MSA whichever is higher. At LE018 proceed to OKTAN and climb to flight plan level. At OKTAN set course as per flight plan.

Aircraft wishing to return must continue to the SID termination point and climb to the last assigned level or MSA or FL080 whichever is higher. Enter the OKTAN hold and hold for 5 MIN. Proceed to TGV and comply with the ILS Y RWY 24 Procedure.